

TIRE SPECIFICATIONS

| COMMERCIAL DESCRIPTION | CAI | Max. dist./hour | TKPH | e mm inch | D mm inch | R' mm inch | RC mm inch | Tread Depth mm 32nds | Dual Spacing mm | Cap. Liter/ Gallon | Measuring Recommended Rim | Other Approved Rims |
|---|------------------------|------------------------|------------------------|------------------------|------------------------|------------------------|------------------------|------------------------|------------------------|-----------------------|---------------------------|--|
| XDR® 4 SPEED + MD E4R** 50/80R57 TUBELESS | 841338 14855 | 34 21.1 | 1822 1248 | 1197 47.1 | 3607 142.0 | 1582 62.0 | 10774 424.0 | 85 107 | 1420 55.9 | 6350 1677.5 | 32.00 / 6.0[5.2] | 29.00/6.0[5.2] 29.00/6.0[5.7] 32.00/6.0[4.8] |
| Bar | 5 | 5.25 | 5.5 | 5.75 | 6 | 6.25 | 6.5 | 6.75 | 7 | | | |
| Psi | 73 | 76 | 80 | 83 | 87 | 91 | 94 | 98 | 102 | | | |
| Machine - Use (kg - lbs) TRANSPORT | | | | | | | | | | | | |
| STANDARD | 57000 125663 | 59000 130095 | 61000 134505 | 63000 138915 | 65000 143325 | 67000 147735 | 69000 152145 | 71000 156555 | 73000 160965 | | | |

THE MICHELIN® XDR® 4 SPEED + MD 50/80R57 TIRE



Business.MichelinMan.com/mining-quarries

Copyright © 2022 Michelin North America, Inc. All rights reserved.
The Michelin Man is a registered trademark owned by Michelin.



**SPEED UP YOUR
PRODUCTIVITY**

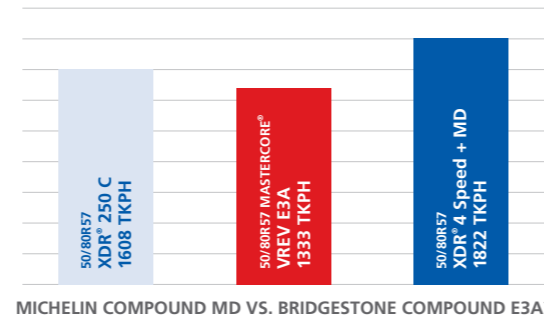


SPEED UP YOUR PRODUCTIVITY

For mines that need to get more productivity than ever out of their trucks, there's the MICHELIN® XDR® 4 SPEED + MD 50/80R57 tire. It's the industry's first E4 tire built specifically for flat, long-haul roads—so mines can discover their highest productivity possible.

1 THE HIGHEST TKPH ON THE MARKET¹ (UP TO 1,822 TKPH)

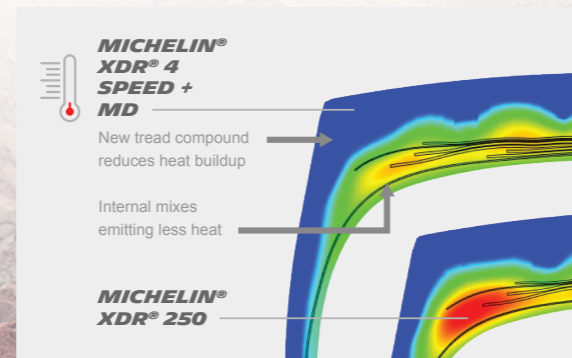
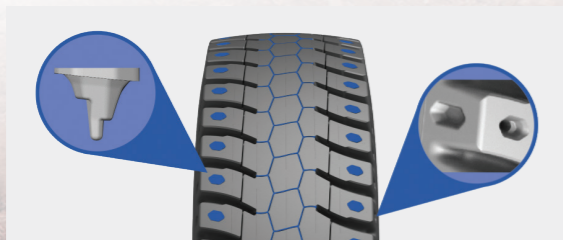
THE MICHELIN® XDR® 4 SPEED + MD 50/80R57 tire offers the highest TKPH on the market,¹ offering 13% higher TKPH than the earlier MICHELIN® XDR® 250 C tire.² It gets up to 1,822 TKPH and a maximum distance of 34 kilometers in 1 hour,³ along with improved grip.⁴



2 INDUSTRY-LEADING THERMAL EFFICIENCY FOR COOLER TEMPERATURES AT HIGH SPEEDS

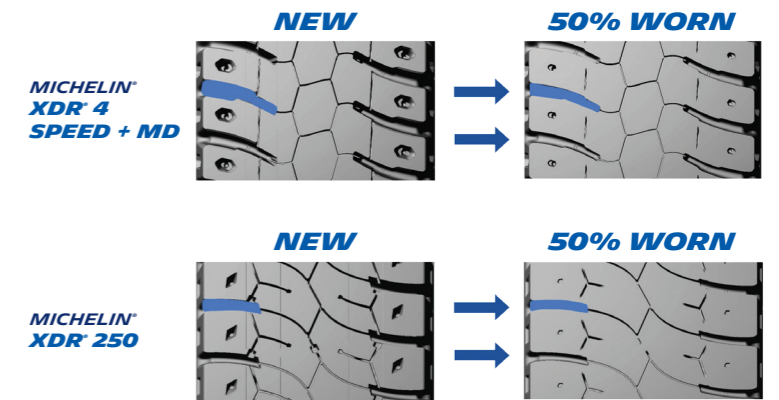
The MICHELIN® XDR® 4 SPEED + MD tire's new technologies increase its acceptable speed threshold³ to help mines maximize their productivity.

- **New casing compound** creates industry-leading level of thermal efficiency that allows the tire to run at cooler temperatures
- **New tread compound** reduces heat buildup to allow the tire to run at cooler temperatures
- **New tread pattern** offers smaller tread blocks, more sipes and deep cooling holes for faster cooling



3 GET MORE GRIP¹

Optimized lateral grooves in the tread immediately evacuate mud, dirt and water to help your trucks avoid decreased traction—even when worn. Compared to the MICHELIN® XDR® 250 C tire, the MICHELIN® XDR® 4 SPEED + MD tire has grooves that are longer and more frequent.¹



4 SMART SUSTAINABILITY FOR A GREENER PLANET

By allowing for more TKPH than any other tire on the market,² the MICHELIN® XDR® 4 SPEED + MD tire lets you maximize your resources and create a more efficient operation. The result: better sustainability for the long haul.

- Uses less resources thanks to a lighter tire
- Weighs 100 kg less than the MICHELIN® XDR® 250 tire, which translates to 600 kg less truck weight
- Supported by Michelin technical teams ready to partner with you to begin measuring the impact



¹ The MICHELIN® 50/80R57 XDR® 4 SPEED + MD tire offers the HIGHEST TKPH on the market, 1,822 TKPH. This significantly exceeds the BRIDGESTONE® 50/80R57 MASTERCORE® VREV E3A tire with 1,333 TKPH.⁽¹⁾

⁽¹⁾ TKPH figures from Michelin 2019 Databook and Bridgestone 2021 Databook. Actual site TKPH will vary based on many factors, including cycle distance, temperature, and load conditions.

² TKPH figures from Michelin 2019 Databook.

³ The MICHELIN® XDR® 4 SPEED + MD tire gets up to 1,822 TKPH and a maximum distance of 34 km in 1 hour.⁽¹⁾

⁽¹⁾ TKPH figures from Michelin 2019 Databook. Actual site TKPH will vary based on many factors, including cycle distance, temperature, and load conditions.

⁴ MORE GRIP thanks to optimized lateral grooves.⁽¹⁾

⁽¹⁾ Improved grip compared to the MICHELIN® XDR® 250 C 50/80R57 tire.

¹ MORE GRIP thanks to optimized lateral grooves.⁽¹⁾

⁽¹⁾ Improved grip compared to the MICHELIN® XDR® 250 C 50/80R57 tire.

² The MICHELIN® 50/80R57 XDR® 4 SPEED + MD tire offers the HIGHEST TKPH on the market, 1,822 TKPH.⁽¹⁾

⁽¹⁾ TKPH figures from Michelin 2019 Databook. Actual site TKPH will vary based on many factors, including cycle distance, temperature, and load conditions.