



URBAN APPLICATIONS

THE MICHELIN X[®] INCITY GRIP D+TIRE

All weather premium drive tire optimized for exceptional traction in urban transit application.⁽¹⁾

Line Haul	Regional	Urban	On/Off Road
<input checked="" type="checkbox"/>	<input checked="" type="checkbox"/>	<input checked="" type="checkbox"/>	<input type="checkbox"/>

Recommended Acceptable



(1) "No bus shall be operated with regrooved, recapped or retreaded tires on the front wheels." US Code of Federal Regulations: Title 49, Transportation; Part 393.75.

(2) Meets the USTMA (U.S. Tire Manufacturers Association) snow traction performance requirements. Meets the Tire and Rubber Association of Canada (TRAC) requirements for severe snow traction.



THE MICHELIN X[®] INCITY GRIP D+ TIRE

All weather premium drive tire optimized for exceptional traction in urban transit application.⁽¹⁾

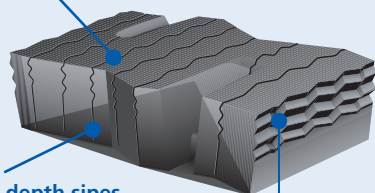
Exceptional Mileage –

Long tread life

- Next-generation application specific compounds
- Unique tread design

Matrix Siping

Matrix sipes provide inter-locking action which offers excellent traction and even wear.



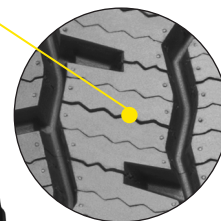
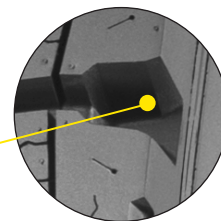
Full depth sipes help provide excellent traction throughout the life of the tread.

Zig-Zag groove walls help provide optimized biting edges and excellent water and snow evacuation.

Exceptional Handling –

Excellent traction and stability

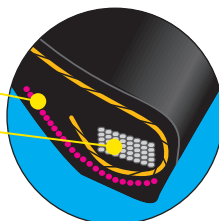
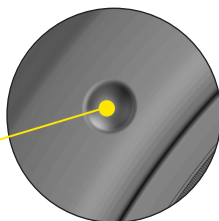
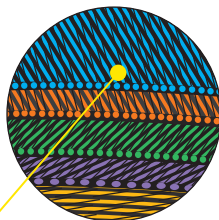
- Wide open shoulder grooves
Outstanding traction
- Matrix siping technology
Traction and stability
- Extra-wide tread
Optimized for all-weather traction



Durable and Dependable

Designed to withstand tough conditions

- Extra Thick Sidewalls
Strong protection against shocks, impacts and curb scrub
- Full Width Elastic Protector Ply
Designed to protect against impacts
- Sidewall Wear Indicators
Designed to promote timely tire rotation for long casing life and enhanced retreadability
- Extended Metallic Chafer
Dissipates heat in bead area
- Optimized Bead Architecture
Designed for great bead durability



Line Haul	Regional	Urban	On/Off Road
-----------	----------	-------	-------------

■ Recommended □ Acceptable

Size	Load Range	Catalog Number	Tread Depth 32nds	Max. Speed (*)		Loaded Radius		Overall Diameter		Overall Width (‡)		Approved Wheels (Measuring wheel listed first.)	Min. Dual Spacing (‡)		Revs Per Mile	Max. Load and Pressure Single				Max. Load and Pressure Dual			
				mph	kph	in.	mm	in.	mm	in.	mm		in	mm		lbs.	psi	kg.	kPa	lbs.	psi	kg.	kPa
305/8522.5	J	20654	26	68	110	20.0	507	42.9	1090	11.8	289	9.00, 8.25	13.5	343	483	7830	120	3550	830	7160	120	3250	830

(*) Exceeding the lawful speed limit is neither recommended nor endorsed.

(‡) Overall width will change 0.1 inch (2.5 mm) for each 1/4 inch change in wheel width. Minimum dual spacing should be adjusted accordingly.

(1) "No bus shall be operated with regrooved, recapped or retreaded tires on the front wheels." US Code of Federal Regulations: Title 49, Transportation; Part 393.75.

MICHELIN® tires and tubes are subject to a continuous development program. Michelin North America, Inc. reserves the right to change product specifications at any time without notice or obligations.

MNA, Inc. continually updates its product information to reflect any changes in Industry Standards. Printed material may not reflect the current Load and Inflation information. Please visit www.business.michelinman.com for the latest product information.

The actual load and inflation pressure used must not exceed the wheel manufacturer's maximum conditions. Never exceed a wheel manufacturer's limits without permission from the component manufacturer.

TO FIND OUT MORE
US: business.michelinman.com
CA: michelintruck.com/en_CA

FIND US ON FACEBOOK
[michelintruck](https://www.facebook.com/michelintruck)

VISIT US ON THE WEB
US: business.michelinman.com/contact-us
CA: michelintruck.com/en_CA/contact-us

CONTACT US BY TELEPHONE
US: 1-888-622-2306
CA: 1-888-622-2306