



URBAN APPLICATIONS

THE MICHELIN® X® INCITY ENERGY Z TIRE

The all-position urban radial tire designed and optimized for new generation electric transit buses.

Line Haul	Regional	Urban	On/Off Road

■ Recommended ■ Acceptable



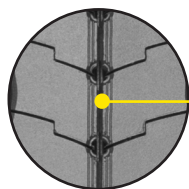
business.michelinman.com



MICHELIN

THE MICHELIN® X® INCITY ENERGY Z TIRE

The MICHELIN® X® INCITY ENERGY Z tire provides up to 30% lower rolling resistance vs. leading competitors. ⁽¹⁾



Optimized Tread Life

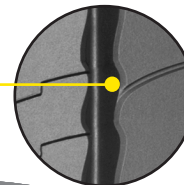
Longer tread life.

• Wear Resistant Tread Pattern

Optimized for urban bus conditions and for the reduction of irregular wear ⁽²⁾

• Regenerating Grooves

Full width grooves appear at end of life for improved wet traction.



Durable and Dependable

Designed to withstand tough urban transit conditions.

• Extra Thick Sidewalls

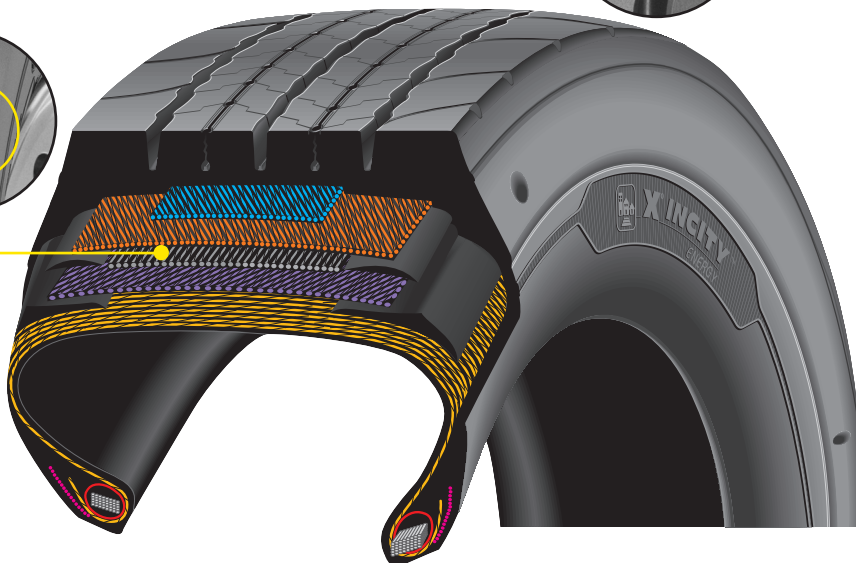
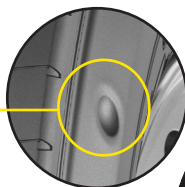
Strong protection against sidewall damage from shocks, impacts and curb scrub.

• Sidewall Wear Indicators

Promote timely tire rotation for long casing life and enhanced retreadability.

• Michelin Infini-Coil® Technology

Over 850 feet of patented metallic cable applied at 0 degrees to stabilize the footprint shape for even wear while providing additional protection from shocks and impacts.

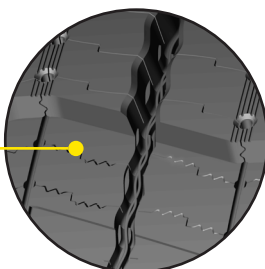


Driver Confidence

Over 500 3D Matrix sipes provide over 66 feet of lateral edges to deliver traction on slippery surfaces throughout the life of the tire.

• Patented Michelin Matrix Sipe Technology

Provides biting edges needed for traction on wet and slippery surfaces while the interlocking 3D technology ensures tread element stability for long, even wear.



Outstanding Fuel Efficiency⁽³⁾

Michelin Advanced Technology tread compounds and tread design combine to create our most energy efficient transit tire while delivering long tread life.

• Optimized Design

Compounds and tread pattern combine to deliver outstanding fuel efficiency⁽³⁾ and mileage for urban applications.



3PMSF & M+S certified

Meets the USTMA (U.S. Tire Manufacturers Association) snow traction performance requirements. Meets the Tire and Rubber Association of Canada (TRAC) requirements for severe snow traction.

Size	Load Range	Catalog Number	Tread Depth	Max. Speed ^(*)		Loaded Radius		Overall Diameter		Overall Width ^(‡)		Approved Wheels (Measuring wheel listed first.)	Min. Dual Spacing ^(‡)		Revs Per Mile	Max. Load and Pressure Single				Max. Load and Pressure Dual			
			32nds	mph	kph	in.	mm	in.	mm	in.	mm		in.	mm		lbs.	psi	kg.	kPa	lbs.	psi	kg.	kPa
315/80R22.5 ⁽²⁾	L	10182	17	68	110	19.6	496	42.1	1071	12.5	317	9.00, 9.75	13.8	351	492	9370	130	4250	900	8820	130	4000	900

(1) Based on internal rolling resistance tests using ISO 28580 test method in tire size 315/80R22.5 LRL all position tire vs. leading competitors' equivalent 315/80R22.5 LRL dimension. Leading competitors are categorized as all position tire configurations offered by the Firestone FS400 tire and Goodyear G652 RTB tire. Actual on-road fuel saving results may vary, and may be impacted by many factors, to include road conditions, weather, environment, combination of tires used, driving habits, tire size, equipment and maintenance.

(2) "No bus shall be operated with regrooved, recapped or retreaded tires on the front wheels." US Code of Federal Regulations: Title 49, Transportation; Part 393.75.

(3) Based on industry standard rolling resistance testing of comparable tires or retreads. Actual results may vary, and may be impacted by many factors, to include road conditions, weather and environment, driver performance, etc.

(*) Exceeding the lawful speed limit is neither recommended nor endorsed.

(‡) Overall widths will change 0.1 inch (2.5 mm) for each 1/4 inch change in wheel width. Minimum dual spacing should be adjusted accordingly.

MICHELIN® tires and tubes are subject to a continuous development program. Michelin North America, Inc. reserves the right to change product specifications at any time without notice or obligations.

MNA, Inc. continually updates its product information to reflect any changes in Industry Standards. Printed material may not reflect the current Load and Inflation information. Please visit www.michelintruck.com for the latest product information. The actual load and inflation pressure used must not exceed the wheel manufacturer's maximum conditions. Never exceed a wheel manufacturer's limits without permission from the component manufacturer.



TO FIND OUT MORE

US: business.michelinman.com
CA: business.michelin.ca



FIND US ON FACEBOOK

[michelintruck](https://www.facebook.com/michelintruck)



CONTACT US ON THE WEB

US: business.michelinman.com/contact-us
CA: business.michelin.ca/contact-us



CONTACT US BY TELEPHONE

US: **1-888-622-2306**
CA: **1-888-622-2306**

Michelin North America Inc., One Parkway South, Greenville, SC 29615

Michelin North America (Canada) Inc., 2500 Daniel Johnson Blvd., Suite 500, Laval (QC) H7T 2P6

Copyright © 2022 MNA(CI). All rights reserved.

Copyright © 2022 Michelin North America, Inc. All rights reserved. An Equal Opportunity Employer PDF Only (02/22)