

BFGoodrich® CROSS CONTROL D

Aggressive all-terrain drive tire designed to provide superior traction and durability to get you through the toughest jobs on and off the road.



www.BFGoodrichTruckTires.com

BFGoodrich
Tires

BFGoodrich® CROSS CONTROL D

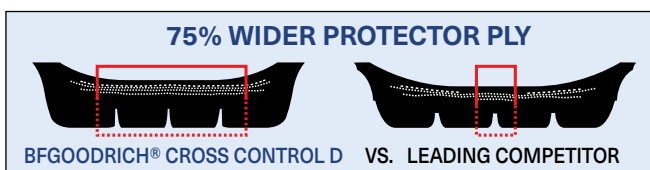


DOWNTIME – FIGHTING DURABILITY

BFGoodrich® tires are built to work as hard as you. Each on/off road tire is constructed with a specially designed casing to protect against the grueling day-to-day environments that you encounter so that you can get the job done on time.

COMBAT DAMAGE AND DOWNTIME

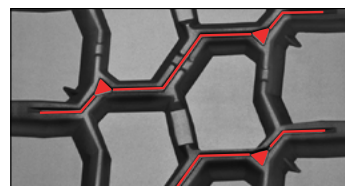
- **Full Coverage Protector Ply** – 75% wider than a leading competitor⁽¹⁾ to provide protection from penetrations and road hazards even past the outer grooves.



- **Anti-cut & chip resistance** fights against aggressions to the tread that could take your tire out of service prematurely.
- **Thick sidewalls** to fight impacts and abrasions.

CASING INTEGRITY & RETREADABILITY

- **Groove Bottom protectors** help reduce stone drilling, protecting your casing integrity and retreadability.



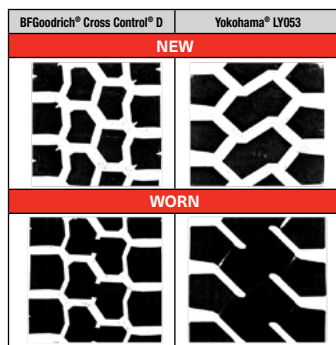
- **Heat Release Compounds** designed to fight heat build up in tires keeping your casing running cool in the toughest conditions.



TERRAIN-GRIPPING TRACTION & HANDLING

25% MORE LUGS ON THE ROAD

25% more snow gripping, dirt-digging lugs to provide you with the traction you need every step of the way.



BUILT FOR TRACTION

Compared to a leading competitor, BFGoodrich® Cross Control D tire is designed to provide superior traction in mud and snow throughout the life of the tire by maintaining an open lugged design at new and worn.⁽²⁾

SERRATED SHOULDER

Staggered shoulder blocks to help provide traction and maneuverability in soft soil and snow conditions



Size	Load Range	Catalog Number	Tread Depth 32nds	Max. Speed (3) mph	Loaded Radius		Overall Diameter		Overall Width (4)		Approved Wheels (Measuring wheel listed first)	Min. Dual Spacing (2)		Revs Per Mile	Max. Load Per Tire Single				Max. Load Per Tire Dual			
					in.	mm.	in.	mm.	in.	mm.		in.	mm.		lbs.	psi	kg.	kPa	lbs.	psi	kg.	kPa
11R22.5	H	08038	29	68	19.7	501	42.1	1070	11.3	288	8.25, 7.50	12.5	318	491	6610	120	3000	830	6005	120	2725	830
11R24.5	H	38810	29	68	20.7	525	44.1	1121	11.2	285	8.25, 7.50	12.5	318	469	7160	120	3250	830	6610	120	3000	830

Note: Wheel listed first is the measuring wheel.

(1) Protector ply width compared to the Yokohama LY053 in size 11R24.5 LRH. Actual results may vary.

(2) Footprint study of a Yokohama® LY053 tire and a BFGoodrich® Cross Control D tire in size 11R24.5 LRH machine buffed to approximately 10 mm of remaining tread.

Tires measured under a load of 3250 kg with an internal pressure of approx. 8.3 bar. Actual results may vary.

(3) Exceeding the lawful speed limit is neither recommended nor endorsed.

(4) Tire section widths and overall widths will change 0.1 inch (2.5 mm) for each 1/4 inch change in wheel width. Minimum dual spacing should be adjusted accordingly.

BFGoodrich® tires are subject to a continuous development program. BFGoodrich® Commercial Truck Tires reserves the right to change product specifications at any time without notice or obligation.

MNA, Inc. continually updates its product information to reflect any changes in Industry Standards. Printed material may not reflect the current Load and Inflation information. Please visit www.bfgoodrichtrucktires.com for the latest product information. The actual load and inflation pressure used must not exceed the wheel manufacturer's maximum conditions. Never exceed a wheel manufacturer's limits without permission from the component manufacturer.

Application	Highway	Regional	Urban	Coach/Bus	On/Off-Road
Position	Steer	Drive	Trailer		

■ Recommended Application ■ Acceptable Application

» Take control today at BFGoodrichTruckTires.com

To Find Your Nearest BFGoodrich® Commercial Truck Tire Dealer Call:
United States, 1-877-788-8899; Canada, 1-888-871-6666; Mexico, 011-52-442-296-1600
or visit www.bfgoodrichtrucktires.com
Copyright © 2018 MNA, Inc. All rights reserved. BWL10000 (revised 09/18)